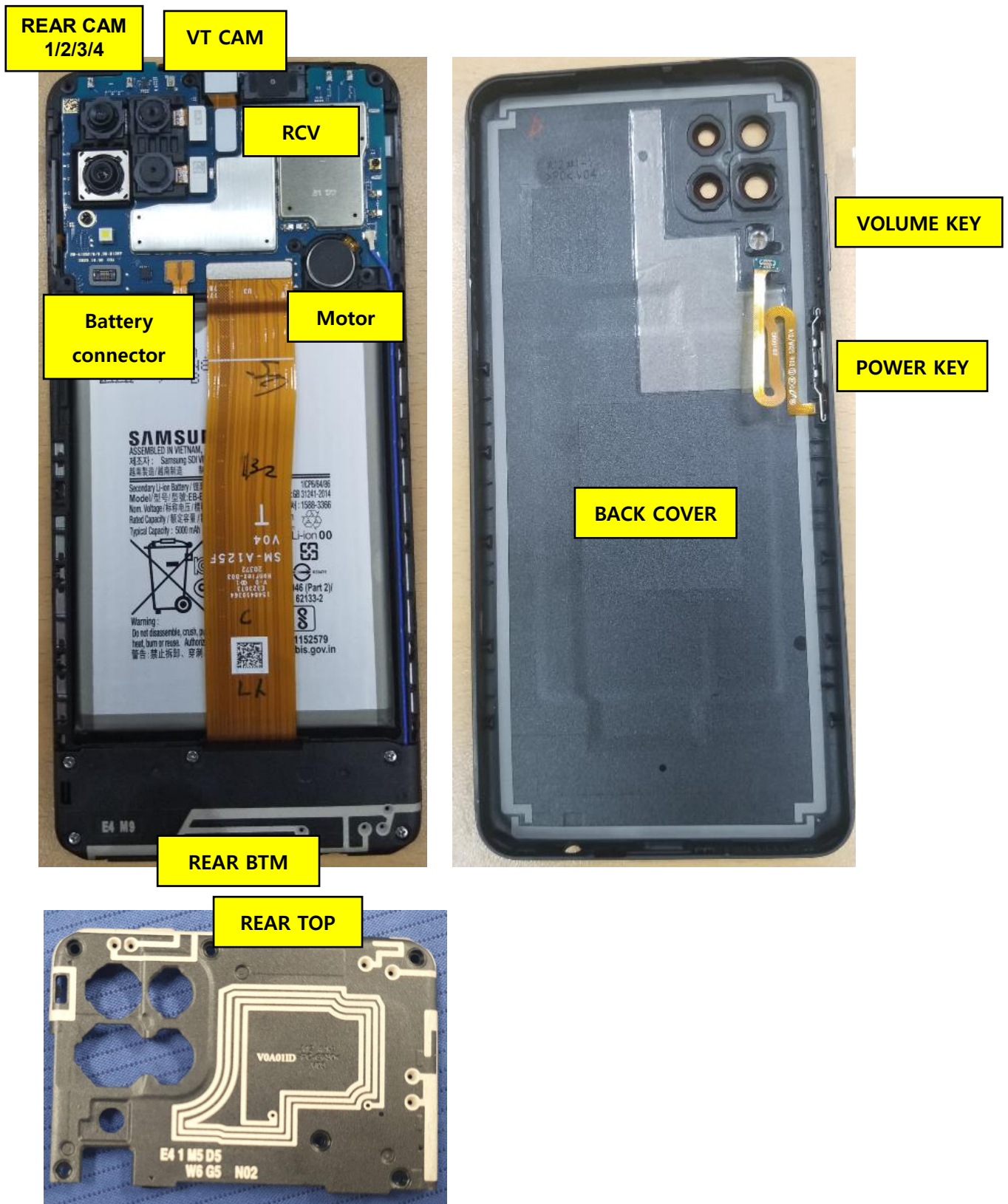

7. Level 2 Repair

7-1. Components on the Rear Case




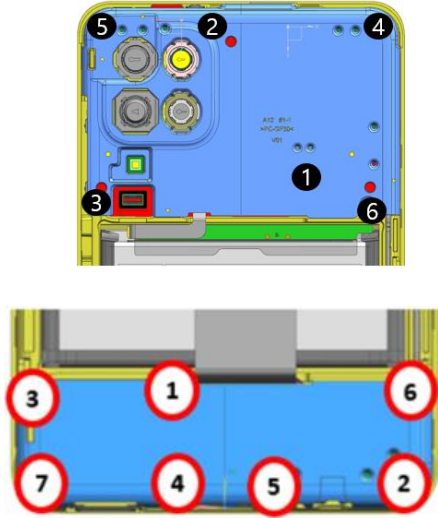

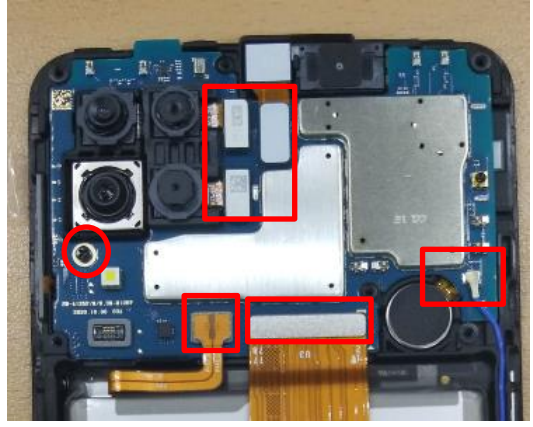
7. Level 2 Repair

7-2. Pre-requisite

	
Tweezers / Disass'y Stick / Screw Driver	Anti-static Gloves
	
Anti-static Mat	Ethyl Alcohol
	
Cotton Swab	

7. Level 2 Repair

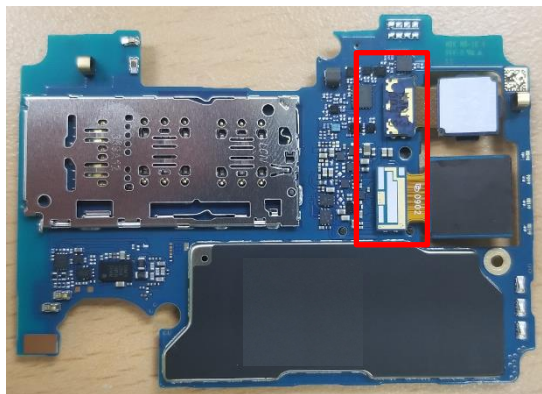
7-3. Disassembly

<div data-bbox="151 320 231 392">1</div> <div data-bbox="247 320 766 425"> 1) Remove SIM Tray on side. 2) Disassemble Rear Cover. 3) Disassemble Power key connector. </div> <div data-bbox="311 459 542 940">  </div>	<div data-bbox="845 320 925 392">2</div> <div data-bbox="957 320 1476 380"> Remove screws 13ea. </div> <div data-bbox="877 436 1316 952">  </div>
※ Caution Be care of scratch.	※ Caution Be care of scratch.
<div data-bbox="135 1070 215 1142">3</div> <div data-bbox="247 1070 790 1153"> 1) Disassemble Rear_TOP_ANT. 2) Disassemble Rear_BTM_ANT. </div> <div data-bbox="311 1176 582 1713">  </div>	<div data-bbox="829 1093 909 1164">4</div> <div data-bbox="941 1093 1484 1265"> 1) Remove PBA screws 1 points. 2) Disassemble LCD Connector. 3) Disassemble Camera Connector(3ea). 4) Disassemble Battery Connector. 5) Disassemble coaxial cable. </div> <div data-bbox="893 1288 1428 1713">  </div>
※ Caution Be care of Rear damage.	※ Caution 1) Be care of scratch. 2) Be care of Rear and connector damage. 3) Be careful not to damage the PBA.

7. Level 2 Repair

5

1) Disassemble Camera Connector(2ea).



※ Caution

- 1) Be care of scratch.
- 2) Be careful not to damage the PBA.

6

- 1) Disassemble SUB PBA Connector.
- 2) Disassemble coaxial cable
- 3) Disassemble SUB PBA.

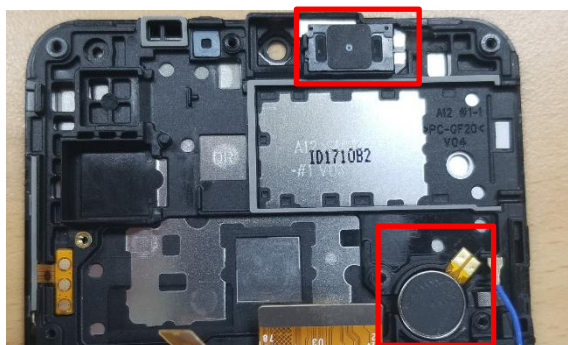


※ Caution

- 1) Be care of scratch.
- 2) Be careful not to damage the PBA.

7

Detach other components.

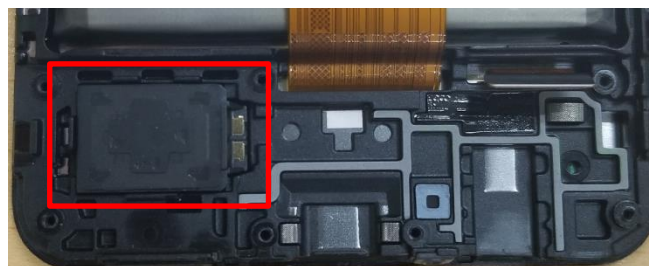


※ Caution

Be care of motor & RCV damage.

8

Detach other components.



※ Caution

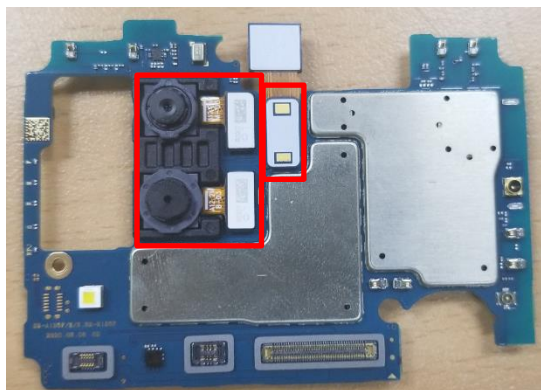
Be care of SPK damage.

7. Level 2 Repair

7-4. Assembly

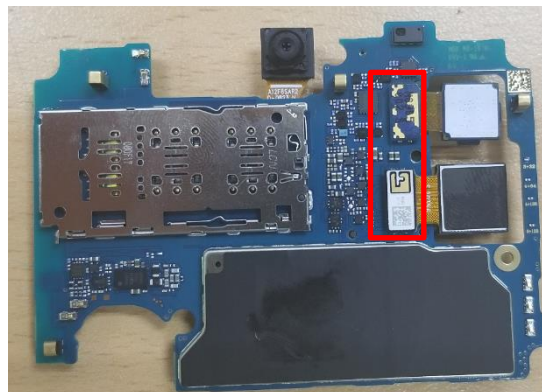
1

- 1) Assemble Main Camera(2ea).
- 2) Assemble VT Camera.



2

- Assemble Main Camera(2ea).



※ Caution

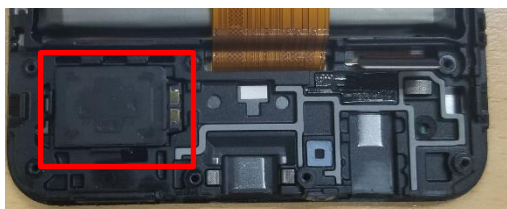
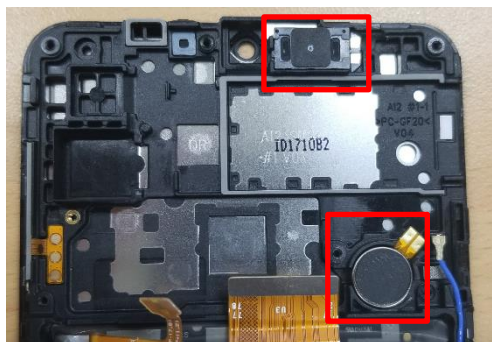
Be care of PBA damages.

※ Caution

Be care of PBA damages.

3

- Assemble RCV, MOT, SPK.

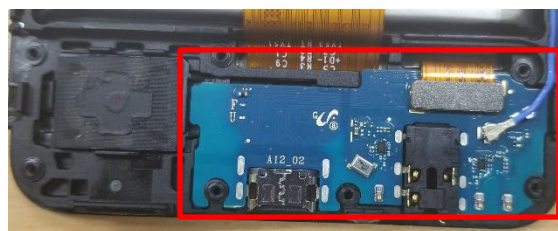


※ Caution

Be care of RCV, NOT, SPK.

4

- 1) Assemble SUB PBA
- 2) Assemble SUB PBA connector
- 3) Assemble coaxial cable



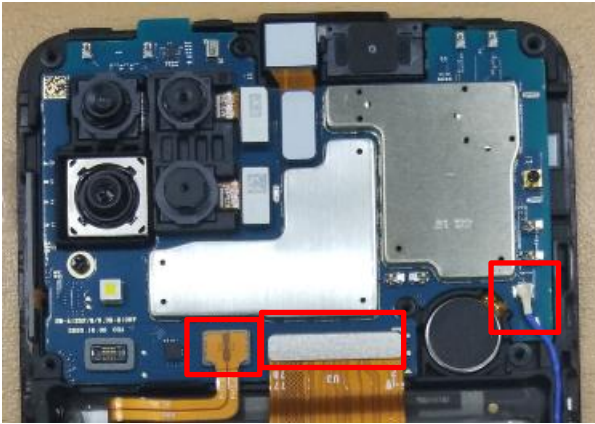
※ Caution

Be care of PBA damages.

7. Level 2 Repair

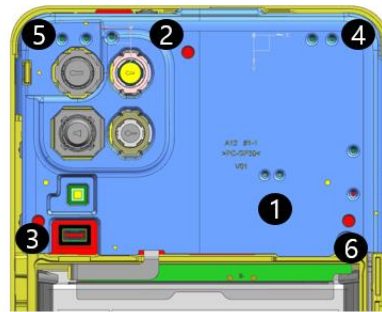
5

- 1) Assemble PBA
 - 2) Assemble LCD connector
 - 3) Assemble Battery connector
 - 4) Assemble coaxial cable
 - 5) Screw insertion 1 Point.
- * Torque Value : 1.1 \pm 7%



6

- 1) Assemble REAR TOP
 - 2) Screw insertion 6 Point.
- * Torque Value : 1.4 \pm 7%

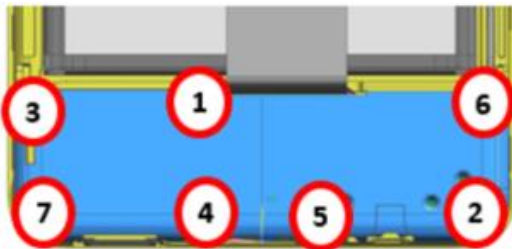


※ **Caution**
Be care of PBA damages.

※ **Caution**
Be care of scratch and REAR damage.

7

- 1) Assemble REAR BTM
 - 2) Screw insertion 7 Point.
- * Torque Value : 1.4 \pm 7%



※ **Caution**
Be care of scratch and REAR damage.

8

- 1) Assemble Power key connector.
- 2) Rear Cover.
- 3) Insert SIM Tray on side.



※ **Caution**
Be care of scratch and REAR damage.